

Dryland Agroforestry in the Southwest: Can We Combine the Old with the New?

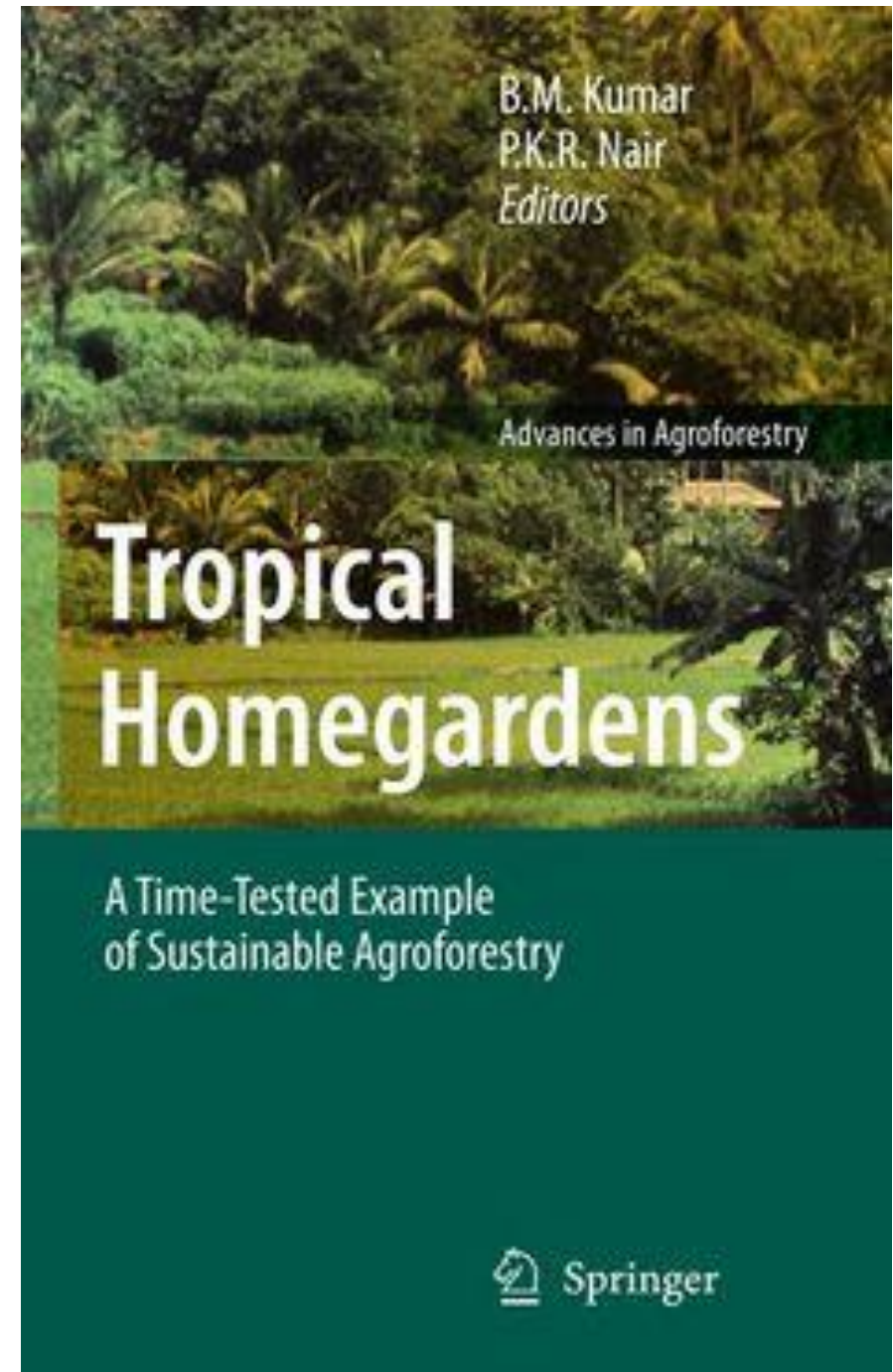
James Allen and Thom Alcoze

School of Forestry, Northern Arizona University



Outline

- A Little Context
 - Personal
 - The Southwest
- Natural Forest-Based Approaches
- Homestead/Homegarden-Based Approaches
- Future Directions



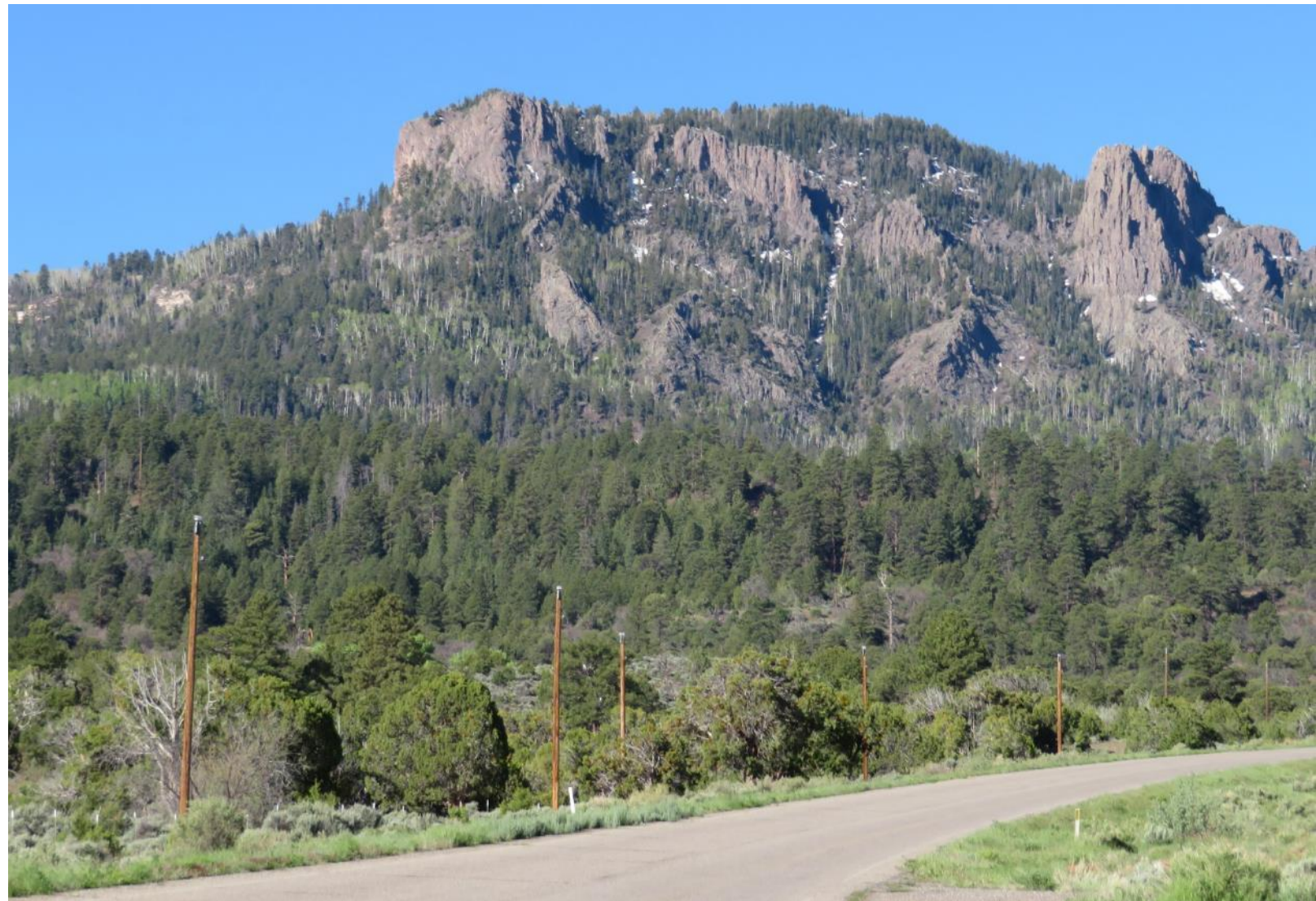


[http://freepages.history.rootsweb.ancestry.com/~fgsiler/Migration%20Photo%20Galleries/\(7\)%20AMERICAN%20SOUTHWEST/AMERICAN%20SOUTHWEST%20ROUTES%20\(GEN%20MAPS\)/SouthWestAreemap.jpg](http://freepages.history.rootsweb.ancestry.com/~fgsiler/Migration%20Photo%20Galleries/(7)%20AMERICAN%20SOUTHWEST/AMERICAN%20SOUTHWEST%20ROUTES%20(GEN%20MAPS)/SouthWestAreemap.jpg)



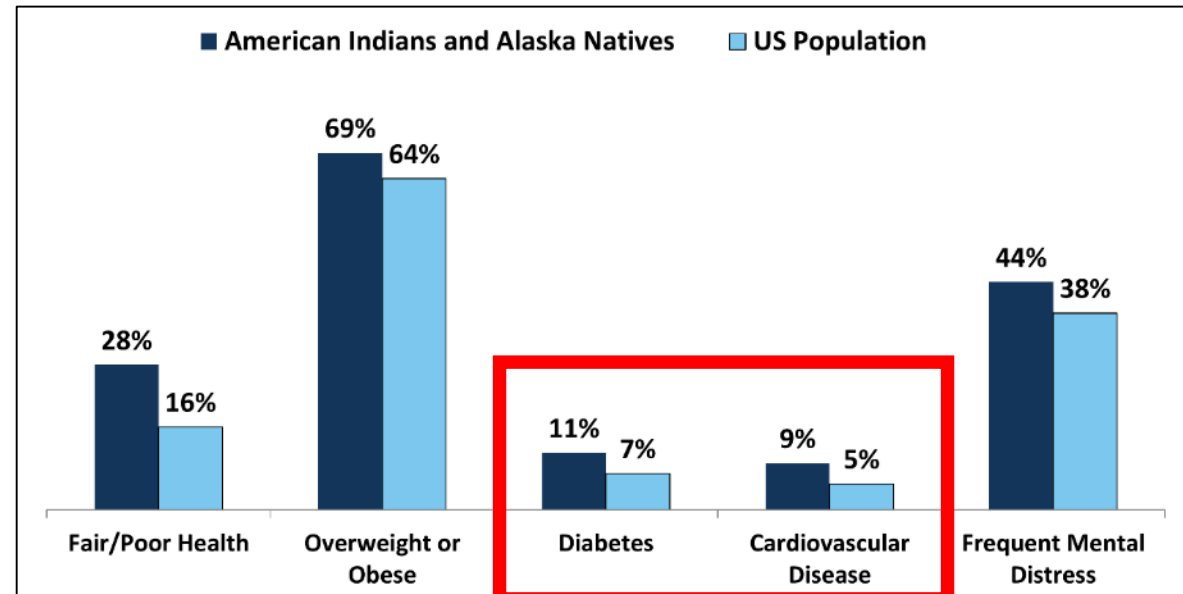
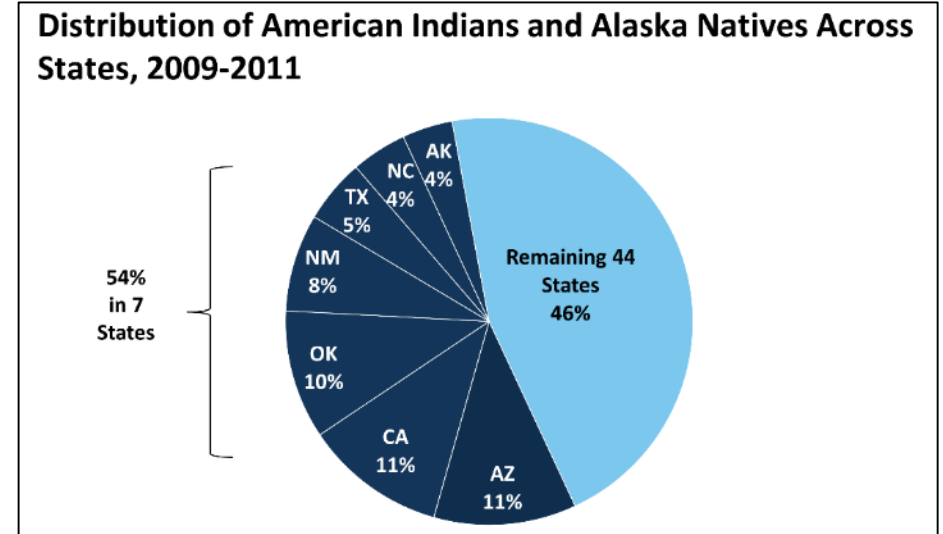


[http://freepages.history.rootsweb.ancestry.com/~fgsiler/Migration%20Photo%20Galleries/\(7\)%20AMERICAN%20SOUTHWEST/AMERICAN%20SOUTHWEST%20ROUTES%20\(GEN%20MAPS\)/SouthWestAreamap.jpg](http://freepages.history.rootsweb.ancestry.com/~fgsiler/Migration%20Photo%20Galleries/(7)%20AMERICAN%20SOUTHWEST/AMERICAN%20SOUTHWEST%20ROUTES%20(GEN%20MAPS)/SouthWestAreamap.jpg)



Why Focus on the Reservations?

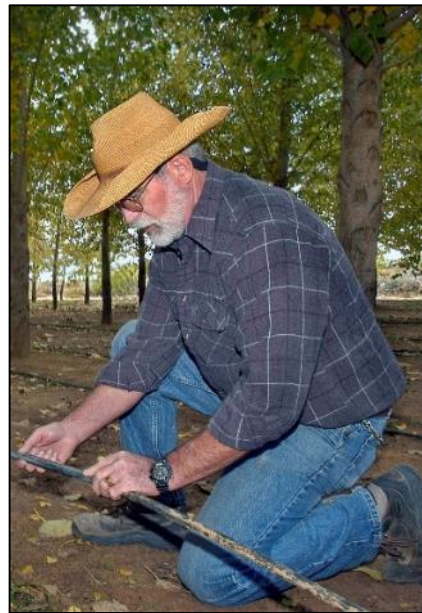
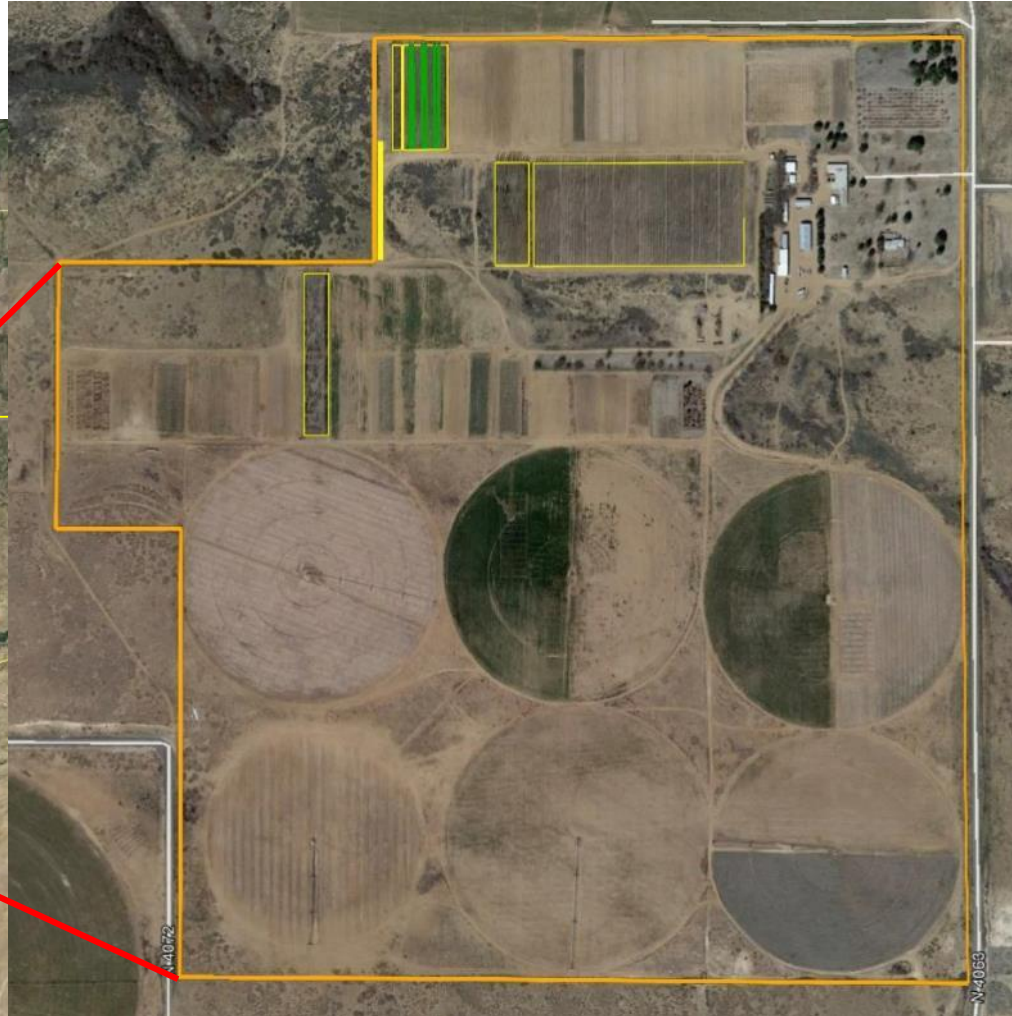
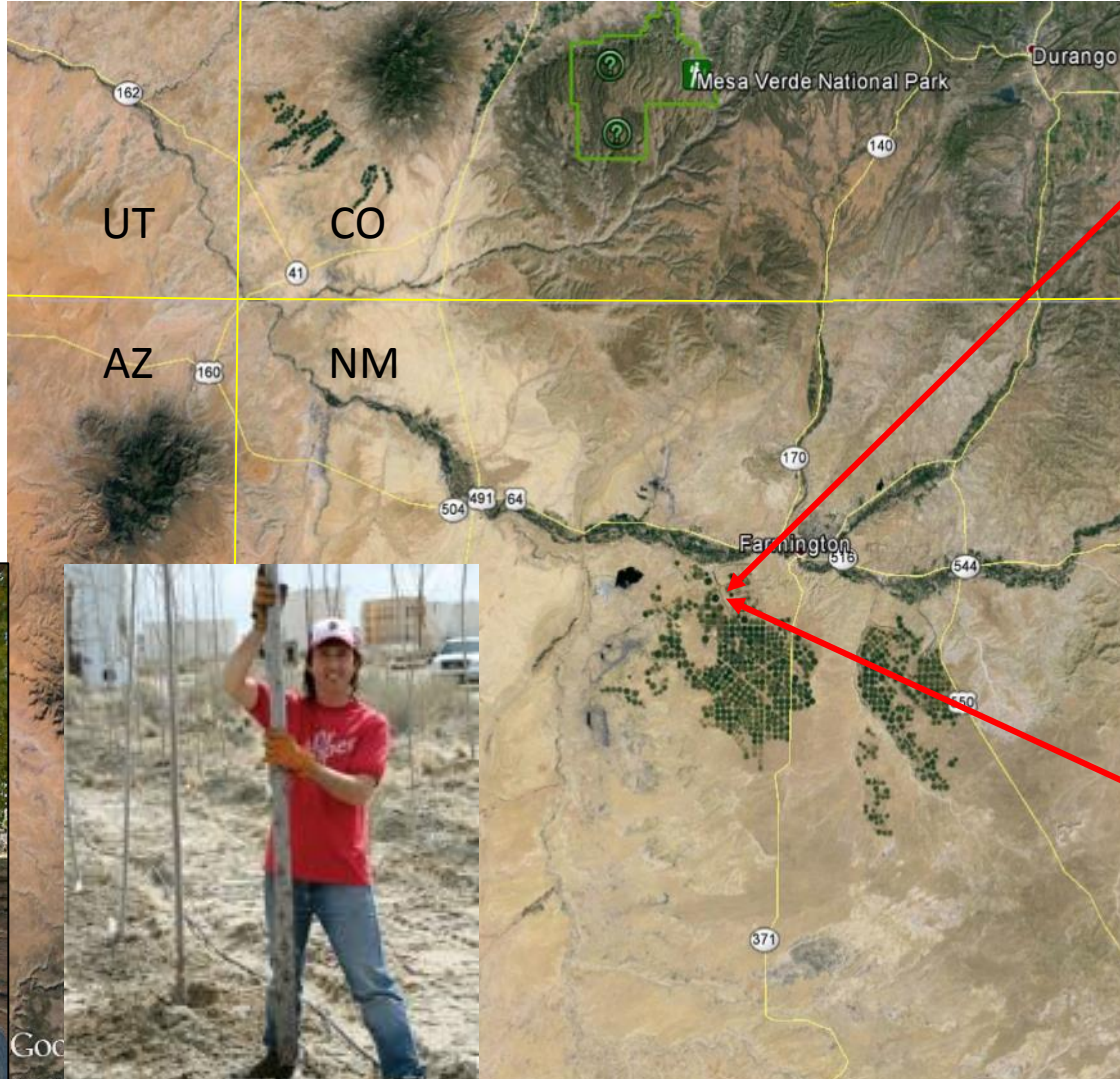
- Very large land base
- A substantial population
 - High poverty rate
 - High incidence of diabetes
- History of sustainable land use/manipulation
- Not much research to date?



Frank Geminden's Farm, Camp Verde, AZ



Hybrid Poplar Research NMSU Agricultural Science Center



Mick O'Neill (l) and Sam Allen (r)

Go
© 2018 Go
meta Land

30 mi





Natural Forest-Based Approaches, (e.g. Rarámuri Burning in Mexico)



“The understory of oak groves is burned to retard new growth of oak and other trees and plants that would compete with the existing oaks. This results in higher yields of acorns and also in some fruit-producing shrubs”

- E. Salmon. 2000. *Ecological Applications* 10(5): 1327-1332.

Crop Production within Forest and Woodlands: Clearings, Swales, and Understory?

Hopi



Rarámuri
(Mexico)

<http://marfapublicradio.org/blog/the-tarahumara-challenge-in-the-sierra-madre/>



Photo by Citlali Cortes Montño

Homestead/Homegarden-Based Approaches



**Orchard and Cliffs, Havasu Canyon, Grand Canyon
1910-1924, NAU Special Collections**



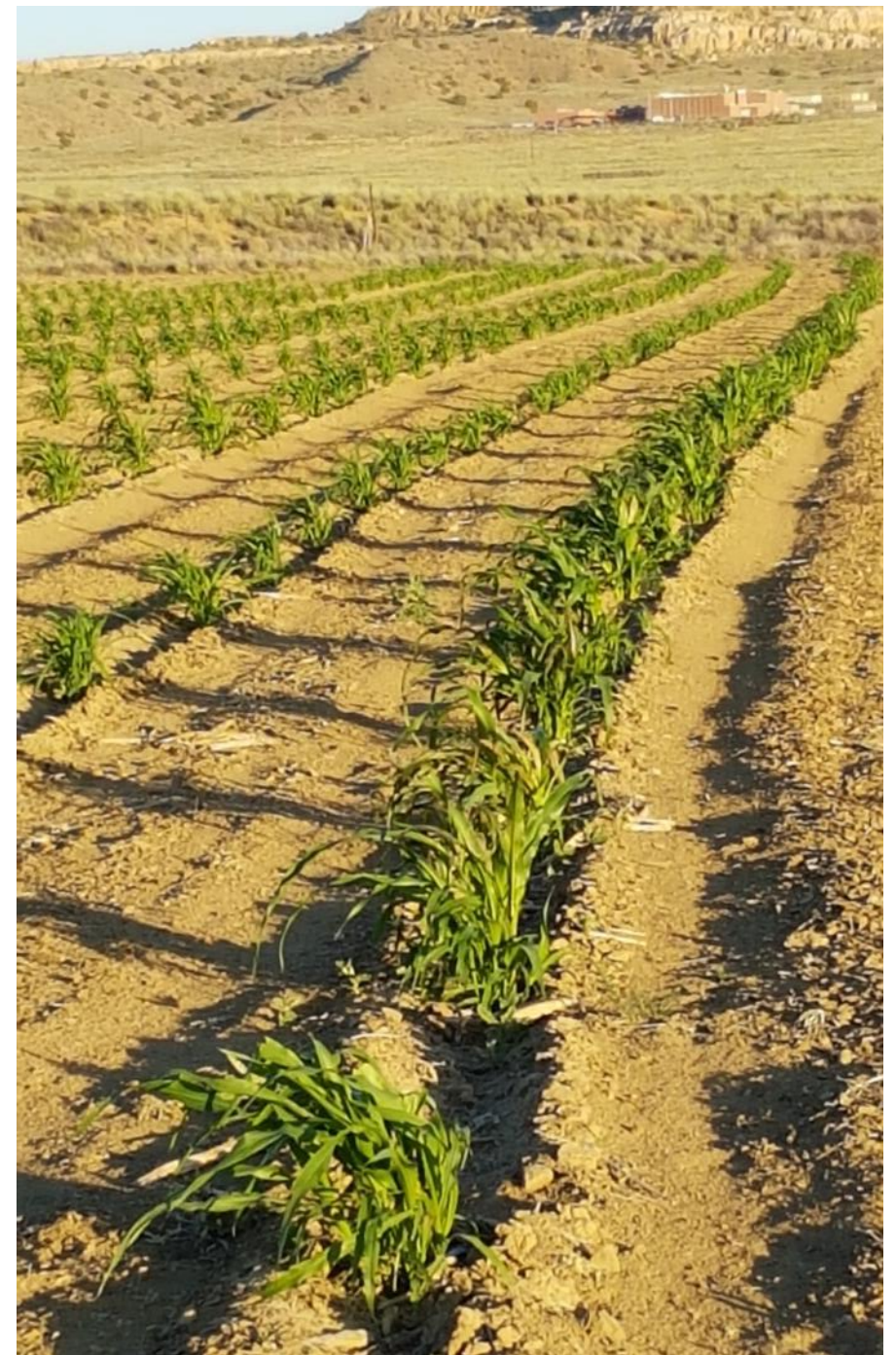




Hopi farming is in a constant state of adaptation.



Michael Kotutwa Johnson





Hopi Tutskwa Permaculture Institute

Revitalizing & Strengthening Community





Hopi Tutskwa Permaculture Institute

Revitalizing & Strengthening Community



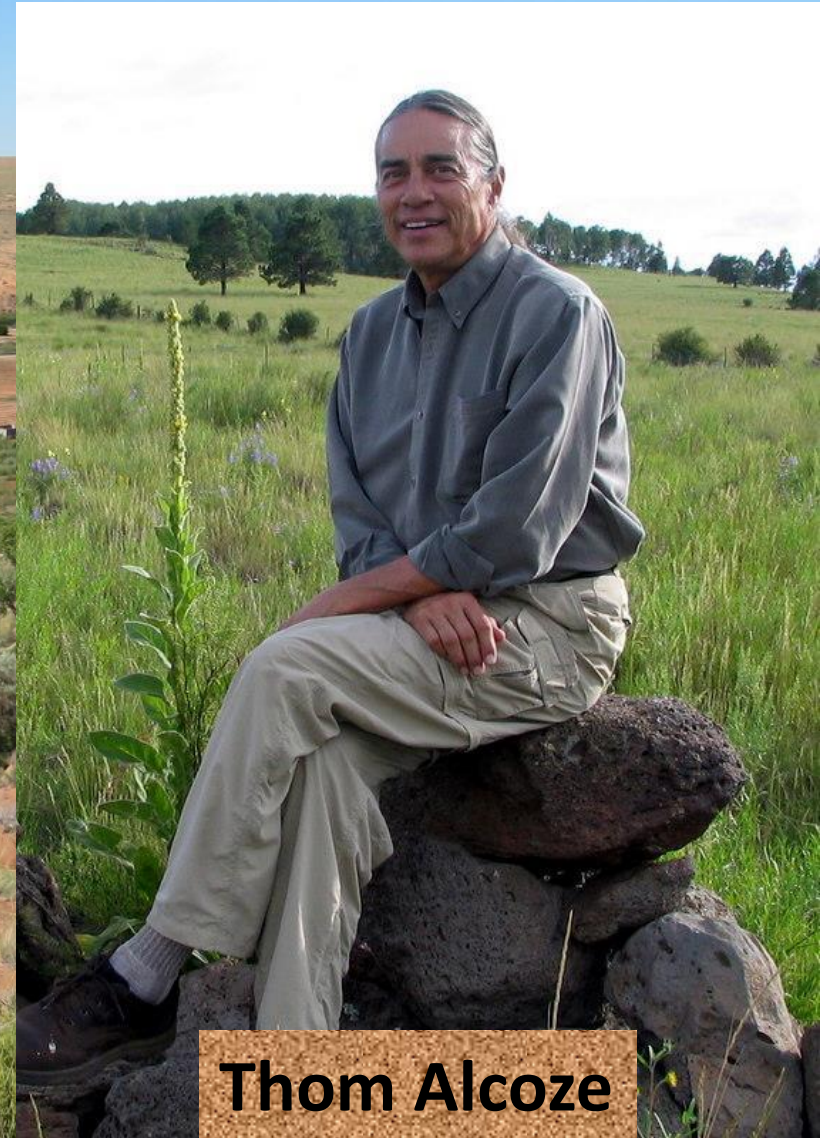
Reservation Schools: Potential Agroforestry Partners?



Future Directions

- Homestead and Farm Surveys
 - Focus on Native American practices
- Build Connections with and among Existing Organizations
- Research Trials and Demonstration Sites
- Southwest Agroforestry Working Group?
- Agroforestry on Public Lands?

Questions?



Thom Alcoze